

Episode 14

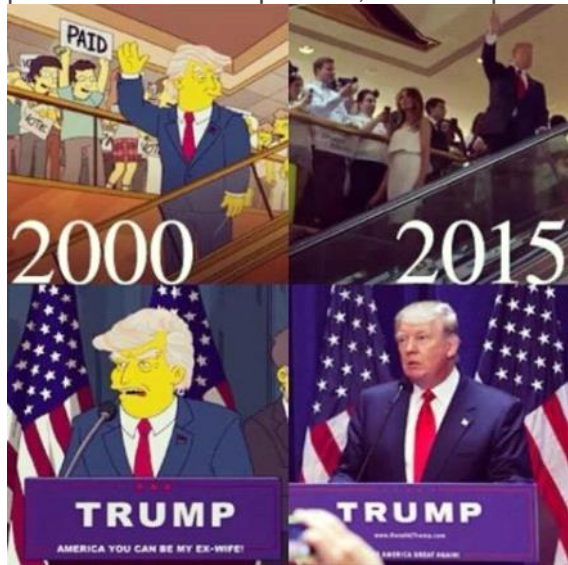
Friday, April 30, 2021 8:01 AM

- What is the Simpson Conspiracy?
- Matt Goerning background
- Notable predictions

MATT GROENING IS A TIME TRAVELER: A SIMPSONS CONSPIRACY THEORY

by Allison Ostapowicz

First airing on Dec. 17, 1989 "The Simpsons" is still running strong on their twenty-ninth season. Most people are familiar with the iconic yellow animated family and their day-to-day life. With a show running for so many years, some coincidences are bound to happen. But with the amount of exact, specific scenarios that were predicted in some episodes, "The Simpsons" have sparked up some conversation.



Eerie similarity This prediction that made social media buzz was actually not aired in 2000. It was aired in 2015, so Groening knew it was a possibility. Source: snopes.com

These predictions go all the way back to 1993 with the Siegfried and Roy tiger attack. Siegfried and Roy were German- American duo of magicians and entertainers who became known for their appearances with white lions and white tigers. Being famous for their well-behaved animals, "The Simpsons" predicted that the tiger was going to turn and attack. In 2003, it actually happened and the media erupted.

"The Simpsons has been on air for almost 30 years, and the show has always had a lot of pop culture references in it. "Predictions" are bound to happen just by chance. I think the conspiracy is a stretch," senior Mya Bell said.

In 1994, "The Simpsons" predicted auto-correct, and in 2007 auto-correct became a necessity on every phone. One episode aired in 1995, Marge Simpson is seen calling through a screen as a way of communication. Today, this is what we call FaceTime, but FaceTime wasn't released to the public until 2010, meaning the episode foreshadowed it 15 years before. Also in 1995, one episode showed a smartwatch being used by kids in a movie theatre, though smartwatches were not public until 2014.

Another episode in 1995 predicted robot librarians, and in 2016 one was invented at Aberystwyth University. A very well-known Simpsons prediction was in an episode that aired in 1997 about an Ebola outbreak, this was shown on a cover of a children's book in the episode. In 2014 an Ebola outbreak occurred.

In 1997, Lisa Simpsons mentioned she wanted to go to New York and holds up a magazine that shows \$9, to the left of a cartoon image of the twin towers, looking like the numbers 9, 1, 1.

In an episode in 1993, there is a painting on a wall that appears to be an image of the attack on the Twin Towers in 2001.

An episode aired in 1998 where Homer Simpsons did in fact predict the mass of the Higgs Boson particle, also known as the "God Particle," while writing on a chalkboard 14 years before it was discovered in 2012.

In that same year, an episode announced that Disney took over Fox, but this takeover didn't come into works until 2017.

One of the most known predictions of "The Simpsons" is predicting Trump's presidency.

In an episode supposedly airing in 2000, they showed Trump becoming president. In 2016 it happened. A side-by-side image of the episode and real life of Trump waving his hand while going down an escalator sparked the interest of social media. A quick factcheck at snopes.com reveals the truth of the situation, but believers were convinced.

"The first time I ever saw the predictions was a poster of 9/11, I've believed it ever since. There's too many

times it happened for it to be fake,” junior Izza Imran said.

Matt Groening also created a show entitled “Futurama” in 1999, which is a show that is set 1,000 years into the future.

Although these predictions could simply just be a coincidence, some people believe that the creator of “The Simpsons,” Matt Groening is a time traveler, and “Futurama” is the documentary.

From <<https://mariandigitalnetwork.com/2018/02/13/matt-groening-is-a-time-traveler-a-simpsons-conspiracy-theory/>>
‘The Simpsons’ Didn’t Predict That

11 Articles

The popular animated TV series does not have clairvoyant powers.

- [Snopes Staff](#)
- Published 22 August 2019

[Share on Facebook](#)[Share on Twitter](#)[Share on Pinterest](#)[Share on Reddit](#)[Share via Email](#)



Image via FOX via Getty Images

On Dec. 17, 1989, the animated show “The Simpsons” debuted on the Fox Network with a Christmas episode entitled “Simpsons Roasting on an Open Fire.” Since then, Springfield’s most famous residents, Homer, Marge, Bart, Lisa, and Maggie, have appeared in more than 600 episodes over the course of 31 seasons.

That’s more than 200 hours of content. If you watched “The Simpsons” non-stop 24 hours a day, it would take you more than a week to finish the entire series. That’s a lot of content, a lot of jokes, and a lot of opportunities for coincidences to appear. Fans of “The Simpsons” have undoubtedly encountered people on social media claiming that the show’s writers have an uncanny ability to predict the future. Even major media companies such as [Buzzfeed](#), [Time](#) and [Hollywood Reporter](#) have published articles touting the prognosticating prowess of “The Simpsons.”

Here’s an excerpt from a [Time Magazine](#) article entitled “15 Times The Simpsons Accurately Predicted the Future.”

“With 28 seasons and counting on the air, The Simpsons is undeniably a television phenomenon. Both the longest-running American sitcom and animated program, the critically acclaimed cartoon is widely recognized as one of, if not the, best shows of all time for its humorous satire of everything from politics and pop culture to everyday family life.

“In fact, throughout its more than 600 episodes, creator Matt Groening and his team have been so on top of the country’s cultural pulse, they’ve even managed to predict several major historical events — along with a few less momentous happenings.”

A viral video from “The Pat McAfee” show (which has more than 2 million views on YouTube and more than 18 million on Facebook) hits on several of these so-called predictions:

While we’ll readily admit that there have been a few interesting coincidences between jokes on “The Simpsons” and real-world incidents, most of these “predictions” have rather simple and mundane explanations. In this collection, we’ll go through some of the most popular and persistent rumors regarding the show’s fortune telling abilities.

Spoiler alert: “The Simpsons” creator Matt Groening is not a time traveler.



Did 'The Simpsons' Predict Trump Would Try to Buy Greenland?The future-predicting abilities of "The Simpsons" have been exaggerated over the years.

- Fact Check
False

[Read more](#)



Did 'The Simpsons' Predict That President Trump Would Touch a Glowing Orb?Memes represented that the animated series showed Trump touching a glowing orb fifteen years before...

- Fact Check
False

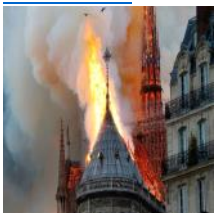
[Read more](#)



Did 'The Simpsons' Predict the Beirut Explosion?According to the internet, "The Simpsons" writers are the world's best prognosticators.

- Fact Check
False

[Read more](#)



Did 'The Simpsons' TV Show Predict the Fire at Notre Dame?"Simpsons" prediction hoaxes appear to be more common than actual Simpsons predictions.

- Fact Check
False

[Read more](#)



Did 'The Simpsons' Predict a Donald Trump Presidency?Images from the 'The Simpsons' showing Donald Trump's announcement of his presidential candidacy are from...

- Fact Check
False

[Read more](#)



Did 'The Simpsons' Predict George Floyd's Death? Predictions are typically made prior to the event they are predicting.

- Fact Check
- False

[Read more](#)



Did 'The Simpsons' Predict a Mass Shooting at a 'Black Panther' Movie Screening? Rumors holding that the show 'The Simpsons' predicted that there would be a mass shooting...

- Fact Check
- False

[Read more](#)



Did 'The Simpsons' Predict President Trump's Death? An image showing a cartoon Donald Trump in a coffin was purportedly featured on 'The...

- Fact Check
- False

[Read more](#)



Did 'The Simpsons' Predict Autocorrect? Commenting on something in the past is not the same as predicting something in the...

- Fact Check
- False

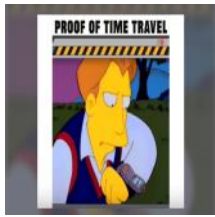
[Read more](#)



Did 'The Simpsons' Predict the Censorship of Michelangelo's 'David'? A case of life imitating art imitating life.

- Fact Check
- Mixture

[Read more](#)



Did 'The Simpsons' Predict the Smartwatch?The smartwatch was first popularized by a fictional character, but was it really a character...

- Fact Check
False

[Read more](#)

From <<https://www.snopes.com/collections/the-simpsons-didnt-predict-that/>>

Sunday, May 2, 2021 7:50 AM

^[listen] ***GRAY-nīng***; born February 15, 1954)^[2] is an American cartoonist, writer, producer, and animator. He is the creator of the comic strip ***Life in Hell*** (1977–2012) and the television series ***The Simpsons*** (1989–present), ***Futurama*** (1999–2003, 2008–2013), and ***Disenchantment*** (2018–present). *The Simpsons* is the longest-running U.S. primetime-television series in history and the longest-running U.S. animated series and sitcom.

Greening has won thirteen [Primetime Emmy Awards](#), eleven for *The Simpsons* and two for *Futurama* as well as a [British Comedy Award](#) for "outstanding contribution to comedy" in 2004. In 2002, he won the [National Cartoonist Society Reuben Award](#) for his work on *Life in Hell*. He received a star on the [Hollywood Walk of Fame](#) on February 14, 2012.

Matt Groening	
 <div>Groening in 2010</div>	
Born	<div>Matthew Abram Groening</div> February 15, 1954 (age 67) <div> Portland, Oregon, U.S.</div>
Education	<u>Lincoln High School</u>
Alma mater	<u>The Evergreen State College</u>
Occupation	<u>Cartoonist</u> , writer, producer, animator
Years active	1977–present
Known for	<u><i>The Simpsons</i></u> <u><i>Futurama</i></u> <u><i>Disenchantment</i></u> <u><i>Life in Hell</i></u>
Spouse(s)	<div>Deborah Caplan</div> <div></div> <div>(m. 1986; div. 1999)</div> <div>Agustina Picasso</div> <div></div> <div>(m. 2011)</div>
Children	8 ^{III}
Signature	
 <div>MATT GROENING</div>	

From <https://en.wikipedia.org/wiki/Matt_Groening>

How do The Simpsons predict so much? Matt Groening's a freemason, according to one conspiracy theory

To be fair, it is quite spooky just how accurate The Simpsons have been about a number of things - most recently, they predicted the US curling team's victory at the Winter Olympics - and there's every possibility that the writing staff has some version of the Sport's Almanac from Back To The Future.

YouTube channel ChannelFrederator does a good explainer on how some of the predictions may have come together - primarily because, well, any of the predictions they made could have conceivably come true and the sheer volume of episodes means they're bound to be right eventually.

Take a look.

So, that's the logical explanation for how they do it. The crazy one?

Matt Groening's actually some kind of high-ranking Freemason who's been littering The Simpsons with nods, winks and references to his all-powerful colleagues in the Freemasons.

It's not enough that they made an entire episode out of them, no - there's references to the Freemasons being behind 9/11, [CERN being controlled freemasons who want to build a gateway to the Alpha Draconis system to bring in the lizards who are controlling the governments of the world](#).

WE'RE THROUGH THE LOOKING-GLASS HERE, PEOPLE.

From <<https://entertainment.ie/tv/tv-news/how-do-the-simpsons-predict-so-much-matt-groenings-a-freemason-according-to-one-conspiracy-theory-202863/>>

Conspiracy theory says *The Simpsons* keeps predicting stuff because Matt Groening is a freemason

The Simpsons, when it's good, is a keen reflection of American pop culture. At its best, however, it also has the eerie ability to portray real-world events years before they come to pass. This last part, as we all know, is due entirely to the fact that series creator Matt Groening [is a Freemason](#) who is subtly playing with viewers by leaving small hints as to his true nature throughout the show.

People [have noticed Nostradogroening's](#) predictions before, whether in the form of the show's depiction of [Disney's acquisition of Fox](#) or [Trump becoming president](#), but a video from YouTube's [ChannelFrederator](#) goes deeper into [the temporal wormhole](#).

It starts off with a quick inventory of some of *The Simpsons*' best predictions, which range from the tiger attack that foreshadowed the end of [Siegfried and Roy's career](#) to somehow knowing who would [win a Nobel Prize](#) years in advance. More importantly, it also tries to figure out why, exactly, this keeps happening, ultimately concluding that a series with as many throwaway visual gags as *The Simpsons*, running for as long as it has, is bound to "predict" a few future events along the way or influence cultural trends by being such a well-loved show.

Mentioned briefly in the video is the [extremely well-founded theory](#) that Groening's actually some sort of high-level Freemason and so has been detailing the world's *real truth* through symbolism.

[READ MORE](#)

There's no shortage of [very grounded](#), [wholly rational](#) videos that expose Groening as the occult visionary that he is. Look at how the show includes hidden symbols (that one video calls the communication system of the Masons) inserted by the shadowy figures, like Groening, who control all mass media. Is there any other explanation for *The Simpsons*' predictions than a weirdly complex form of global programming?

Top Articles



ChannelFrederator's more pedestrian explanations, no matter how logical they may be, are only a distraction of the simple, much more reasonable truth: Matt Groening is part of a secret society with intimate knowledge of all human experience, past, present, and future. After all, the power that comes from belonging to a group capable [of making Steve Guttenberg](#) a star cannot be underestimated.

From <<https://www.avclub.com/the-real-reason-the-simpsons-keeps-predicting-stuff-ma-1823644315>>

Bill Oakley

Tuesday, May 4, 2021 6:35 PM

William Lloyd Oakley (born February 27, 1966) is an [American](#) television writer and producer, known for his work on the animated comedy series [The Simpsons](#). Oakley and [Josh Weinstein](#) became best friends and writing partners at [St. Albans School](#); Oakley then attended [Harvard University](#) and was Vice President of the [Harvard Lampoon](#). He worked on several short-term media projects, including writing for the variety show *Sunday Best*, but was then unemployed for a long period. Oakley and Weinstein eventually penned a [spec script](#) for [Seinfeld](#), after which they wrote "[Marge Gets a Job](#)", an episode of *The Simpsons*. Subsequently, the two were hired to write for the show on a permanent basis in 1992. After they wrote episodes such as "[Springfield \(Or, How I Learned to Stop Worrying and Love Legalized Gambling\)](#)", "[Bart vs. Australia](#)" and "[Who Shot Mr. Burns?](#)", the two were appointed [executive producers](#) and [showrunners](#) for the [seventh](#) and [eighth](#) seasons of the show. They attempted to include several emotional episodes focusing on the [Simpson family](#), as well as several high-concept episodes such as "[Homer's Enemy](#)", "[Two Bad Neighbors](#)" and "[The Principal and the Pauper](#)", winning three [Primetime Emmy Awards](#) for their work. After they left *The Simpsons*, Oakley and Weinstein created [Mission Hill](#). The show was plagued by promotional issues and was swiftly canceled. They worked as [consulting producers](#) on [Futurama](#), then created [The Mullets](#) in 2003. The two wrote several unsuccessful TV pilots, and were due to serve as showrunners on [Sit Down, Shut Up](#) in 2009. Oakley left the project over a contract dispute. He has since written for [The Cleveland Show](#) and [Portlandia](#), without Weinstein. He also served as co-executive producer and writer on *Portlandia*, sharing a [Writers Guild of America Award](#) with his fellow writers in 2013. In 2018, Oakley reunited with Weinstein as co-executive producer on [Disenchantment](#), [Matt Groening](#)'s animated series for [Netflix](#). Oakley is married to fellow writer Rachel Pulido.

From <https://en.wikipedia.org/wiki/Bill_Oakley>

Bill Oakley	
<div></div> <div>Oakley in 2008</div>	
Born	February 27, 1966 (age 55) <div></div> <div>Westminster, Maryland, U.S.</div>
Occupation	Television writer
Period	1988–present
Genre	Comedy
Spouse	Rachel Pulido
Children	3

From <https://en.wikipedia.org/wiki/Bill_Oakley>

17 Times *The Simpsons* Accurately Predicted the Future



CR: FOX
BY [MEGAN MCCLUSKEY](#)

UPDATED: JUNE 3, 2020 2:29 PM EDT | ORIGINALLY PUBLISHED: MARCH 9, 2017 9:45 AM EST

With 31 seasons and counting on the air, *The Simpsons* is undeniably a television phenomenon. Both the [longest-running](#) American sitcom and animated program, the critically acclaimed cartoon is widely recognized as one of, if not the, best shows of all time for its humorous satire of everything from politics and pop culture to everyday family life.

In fact, throughout its nearly 700 episodes, creator [Matt Groening](#) and his team have been so on top of the country's cultural pulse, they've even managed to predict several major historical events — along with a few less momentous happenings.

Here are 17 times *The Simpsons* made eerily accurate predictions about the future.



[Subscribe to TIME](#)



Write to Megan McCluskey at megan.mccluskey@time.com.

Siegfried and Roy's Tiger Attack

Season 5, Episode 10: *Springfield (Or, How I Learned to Stop Worrying and Love Legalized Gambling)*

Predicted: 1993

Came true: 2003

After Springfield decides to legalize gambling, Mr. Burns opens a casino where German magicians Gunter and Ernst perform a routine, seeming to spoof the long-running Las Vegas Siegfried and Roy show. Tragically, a bit in which the animated duo is attacked by their tiger came to fruition 10 years later when Roy Horn was mauled on stage by a [white Bengal tiger](#), leaving him partially paralyzed and ending the long-running production.

Advertisement

Autocorrect Fails

Season 6, Episode 8: *Lisa on Ice*

Predicted: 1994

Came true: 2007

During a Springfield Elementary School assembly, Kearney asks fellow bully Dolph to take a memo to "Beat up Martin" on his "Newton" — Apple's early attempt at a personal digital assistant. However, the machine translates the message into "Eat up Martha" instead, foreshadowing the common messaging errors people blame on iPhone's [autocorrect technology](#).

In fact, Nitin Ganatra, Apple's former director of engineering for iOS applications, revealed in 2013 that the *Simpsons* gag served as a rallying cry while developing the software for the

Simpsons predicted the future.

[BUSINESS](#)
February 26, 2020
[Niharika Goel](#)
909views



Haven't we, on most frequent occasions shouted "The *Simpsons* didn't"? but to a mere surprise they have actually with a very strange truth predicted the future.

When The Simpsons predicted the future...

1. Donald Trump Becomes President (Season 11, Episode 17)



In the episode "Bart to the [Future](#)" we get a glimpse of a future wherein Lisa is President of the United States. And when carefully looked upon they bring up a joke about how Lisa's tenure is being hampered by a budget crisis caused by President Trump. It must have been a ridiculous notion to watch in those times, when the story line had been created, and the idea of Trump being the president must have ended up as a big gag for the audience. But don't we know who's elected as the current president of the United States? Despite all impossibilities, didn't the prediction come out true.

2. Disney Buys Fox (Season 10, Episode 5)



In "When You Dish Upon a Star" there's a sign gag featuring the 20th Century Fox logo with the words "A Division of Walt Disney Co." on it. Moving to 20 years later, and to an astonishing discovery in the present, Disney juggernaut did purchase Fox.

It has to be a strange pop-culture prediction from this episode that comes true.

3. Milhouse Predicts a Nobel Prize Winner (Season 22, Episode 1)



In fact, Nitin Ganatra, Apple's former director of engineering for iOS applications, revealed in 2013 that the *Simpsons*' gag served as a rallying cry while developing the software for the iPhone's keyboard. "If you heard people talking and they used the words 'Eat up Martha,' it was basically a reference to the fact that we needed to nail the keyboard. We needed to make sure the text input works on this thing, otherwise, 'Here comes the Eat up Marthas,'" he told [Fast Company](#).

FaceTime

Season 6, Episode 19: Lisa's Wedding

Predicted: 1995

Came true: 2010

In this futuristic installment, Lisa talks with Marge using her phone's video chat capabilities, predating the popular FaceTime feature of today's iPhones by 15 years.

Advertisement

Faulty Voter Machines

Season 20, Episode 4: Treehouse of Horror XIX

Predicted: 2008

Came true: 2012

In a bit inspired by the 2008 presidential election, Homer tries to vote for Barack Obama only to have a voting machine record his selection as John McCain several times. Coincidentally, when it came time for Obama to run for a second term in 2012, [video footage](#) emerged of a Pennsylvania machine switching a vote from Obama to one for his Republican opponent, Mitt Romney. The machine was [reportedly taken out of commission](#).

Advertisement

The God Particle

Season 10, Episode 2: The Wizard of Evergreen Terrace

Predicted: 1998

Came true: 2012

The existence of the [Higgs boson](#) or "God particle" — a breakthrough that helps explain how everything in the universe has mass — wasn't confirmed by physicists until 2012. But according to Dr. Simon Singh, the author of *The Simpsons and their Mathematical Secrets*, after Homer decided to become an inventor in "The Wizard of Evergreen Terrace," he was pictured standing in front of a blackboard with an equation that predicted the mass of the yet-to-be-discovered particle.

"If you work it out, you get the mass of a Higgs boson that's only a bit larger than the nano-mass of a Higgs boson actually is," he told [the Independent](#). "It's kind of amazing as Homer makes this prediction 14 years before it was discovered."

juggernaut did purchase Fox.

It has to be a strange pop-culture prediction from this episode that comes true.

3. Milhouse Predicts a Nobel Prize Winner (Season 22, Episode 1)



It shouldn't be surprising that Lisa, Milhouse's prediction for economics was Bengt R. Holmstrom.

The whole storyline built up to a humorous joke where Krusty the clown might win the the Nobel Peace Prize, but there was a shrewd hidden prediction slipped in. In 2016, Holmstrom did win the Nobel Prize in Economics alongside Oliver Hart.

4. The Ebola outbreak 1977



The tv show predicted the future, in the episode where the bed ridden son is acknowledged by his mother, who encourages him to read a book on Ebola virus. The conspiracy theorists have pointed out the possibility of them predicting the outbreak which in the present overshadows, as it convicts it's first suffered. Therefore, despite all these evidences if it stikes our mind that there could be a possibility of co incidences, wouldn't the conscience remind us that coincidences dont take place time and again?

The predictions coming out to be true with eventual future, might reveal the other plot lines to be re discovered in the near future.

From <<https://conspiracytheories.in/simpsons-predicted-the-future/>>

Everything *The Simpsons* Has Predicted in 2021 and Beyond

Ted Cruz's Cancún scandal is the latest in a long line of *Simpsons* predictions.



By [Justin Kirkland](#)
Feb 19, 2021

NSA Spying Scandal

The Simpsons Movie

Predicted: 2007

Came true: 2013

When the Simpson family is forced to go into hiding following their escape from the EPA biodome enclosing Springfield, the NSA locates Marge and the kids by listening in on one of their conversations. However, it wasn't until six years after *The Simpsons Movie* hit theaters that [Edward Snowden](#) first blew the whistle on the government mass surveillance of Americans' phone and Internet records.

Advertisement

Smartwatches

Season 6, Episode 19: Lisa's Wedding

Predicted: 1995

Came true: 2014

When Lisa visits a fortune-teller at a renaissance fair, viewers are transported 15 years into the future to 2010 — a time when wristwatch communication technology exists. However, even the Simpsons' future society was a little ahead of its time, as modern voice recognition-enabled smartwatches weren't rolled out until 2014.

Advertisement

America's Ebola Outbreak

Season 9, Episode 3: Lisa's Sax

Predicted: 1997

Came true: 2014

This installment saw Marge offer to read a depressed Bart a book titled *Curious George and the Ebola Virus*. This moment was [widely circulated](#) during the [2014 American Ebola outbreak](#) when YouTube user Thecontroversy7 created a [video](#) laying out a theory revolving around *The Simpsons'* predictive tendencies.

Advertisement

FIFA's Corruption Scandal

Season 25, Episode 16: You Don't Have to Live Like a Referee

Predicted: 2014

Came true: 2015

Although the world football federation representative who asks Homer for help repairing the organization's image isn't explicitly named as a member of FIFA, his arrest turned out to be uncannily similar to those of the real-life FIFA officials who were [arrested on corruption charges](#) about a year later. Not to mention that the episode also correctly predicted Germany's defeat of Brazil in the 2014 World Cup.

Advertisement

Greece's Debt Default

Season 23, Episode 10: Politically Inept, with Homer Simpson

Predicted: 2012

Came true: 2015

When Homer appears as a guest commentator on cable news show *Head Butt*, a ticker runs across the bottom of the screen that reads, "Europe puts Greece on eBay."

Of course, this was three years before Greece became the first developed country to [default to the International Monetary Fund](#), plunging the country deeper into economic crisis.

Advertisement



ELAINE CHUNG

People have been trying to predict the future for as long as we've been around as a species—Nostradamus, the Mayans, Miss Cleo (may she rest in peace). They've all taken their shots (and subsequent misses) at predicting what is to come in our lifetimes. Most notably, we seem to keep missing the end of the world, may it come soon and swiftly. But perhaps we've been looking in the wrong place. If any one entity is going to correctly forecast our demise, it's likely going to be the long-running animated series, *The Simpsons*.

[related stories](#)



[Marge Simpson Isn't Having Any Name-Calling](#)



[12 Things You Didn't Know About The Simpsons](#)

For over three decades, the series has thrived with a dedicated audience invested in the hijinks of Homer, Marge, Bart, Lisa and Maggie. But the catch is that despite many of its storylines being asinine beyond belief, they end up getting mimicked in real life later on. Whether that's strange, unconscious manifestation or clairvoyance is up to you to decide, but it's impossible to look at *The Simpsons* and not feel a bit uneasy about how spot on the FOX show seems to be about what's to come. Even creepier, the show seems to be getting it right with increasing accuracy. "It's a little sad that something you put in a show as a joke because it was so crazy came true," longtime *Simpsons* showrunner [Al Jean told Esquire](#) shortly after they predicted Donald Trump becoming president. Below is a look at some of their greatest hits. From tiger attacks to Trump presidency, it's best to keep an eye on *The Simpsons*. Wise are those who prepare via an animated TV series.

Ted Cruz Goes on Vacation Mid-Disaster

This content is imported from Twitter. You may be able to find the same content in another format, or you may be able to find more information, at their web site.

In the most recent edition of *The Simpsons Predicts the Future*, someone has unearthed a clip that looks a *lot* like Senator Ted Cruz's latest debacle. Amid a pandemic and a state-wide weather disaster that has left Texans without power and water, [Cruz packed up shop](#), left his dog at home, and took his family on a vacation to Cancún. It wasn't until he was clocked at the airport that he was forced to fly *back* home and issue an apology.

ADVERTISEMENT - CONTINUE READING BELOW

Donald Trump's Presidency

This content is imported from YouTube. You may be able to find the same content in another format, or you may be able to find more information, at their web site.

In the now famous episode "Bart to the Future." Lisa Simpson is

Of course, this was three years before Greece became the first developed country to [revert](#) to the International Monetary Fund, plunging the country deeper into economic crisis.

Advertisement

The Nobel Prize

Season 22, Episode 1: Elementary School Musical

Predicted: 2010

Came true: 2016

Bengt Holmström may not have won the Nobel Prize in Economics until 2016, but one *Simpsons* character was betting on him six years prior. In a scene from the season 22 premiere in which Martin holds up a scorecard depicting his Nobel Prize betting pool with Lisa, Milhouse and Database, the MIT professor is clearly marked in one of Milhouse's squares.

Advertisement

President Donald Trump

Season 11, Episode 17: Bart to the Future

Predicted: 2000

Came true: 2016

When Bart flashes forward into adulthood, viewers learn that Lisa not only becomes president, but inherits "quite a budget crunch" from her [predecessor, Donald Trump](#). "The country is broke?" she asks her aides in one scene. "How can that be?"

At the time, the real Trump presidency was still 16 years away. However, in a 2016 interview with [The Hollywood Reporter](#), writer Dan Greaney explained the joke was meant as a warning to the country. "That just seemed like the logical last stop before hitting bottom," he said. "It was pitched because it was consistent with the vision of America going insane."

Advertisement

Lady Gaga's Halftime Show

Season 23, Episode 22: Lisa Goes Gaga

Predicted: 2012

Came true: 2017

Nearly five years before Lady Gaga [descended from the roof](#) of Houston's NRG Stadium for the halftime show of Super Bowl LI, her *Simpsons* doppelgänger [performed a song](#) for the residents of Springfield while suspended in the air. The two Mother Monsters even wore similar silver ensembles for their shows.

Advertisement

Disney's Fox Takeover

Season 10, Episode 5: When You Dish Upon A Star

Predicted: 1998

Came true: 2017

After a trip to Springfield, director Ron Howard pitches a screenplay that Homer wrote to producer Brian Glazer of 20th Century Fox. At the beginning of the scene, a sign can be seen at the Fox studio lot that reveals the company is now "A Division of Walt [Disney](#) Co."

Cut to nearly 20 years later and this sale is officially underway, with the news breaking that Disney has reached a deal to acquire [\\$66.1 billion-worth of Fox](#) on Dec. 14, 2017.

Advertisement

Team USA's Olympic Curling Win

Season 21, Episode 12: Boy Meets Curl

Predicted: 2010

Came true: 2018

Donald Trump's Presidency

This content is imported from YouTube. You may be able to find the same content in another format, or you may be able to find more information, at their web site.

In the now famous episode "Bart to the Future," Lisa Simpson is president, which is *not* terribly hard to fathom. But what is eerie is that this episode, airing in 2000, predicted that she would succeed President Donald Trump, whose fictional term as President seems as disastrous as his *actual* term.

Kamala Harris... Down to the Outfit

This content is imported from Twitter. You may be able to find the same content in another format, or you may be able to find more information, at their web site.

People called out the weird Trump prediction back during his successful election run in 2016, but then the whole thing just doubled down when Kamala Harris appeared in what seems to be a replica of Lisa's outfit just days after being elected Vice President. It *does* seem a bit too on the nose, but also, Harris doesn't seem like a typical *Simpsons* fan, so who knows.

The Siegfried and Roy Tiger Attack

This content is imported from YouTube. You may be able to find the same content in another format, or you may be able to find more information, at their web site.

Ten years before a tiger would attack Roy Horn during a live performance, *The Simpsons* featured an episode where the duo would be attacked by a white tiger. Yikes.

Apple Products and Features

This content is imported from YouTube. You may be able to find the same content in another format, or you may be able to find more information, at their web site.

Use FaceTime lately? An Apple watch? Or just had a really erroneous last minute text switch thanks to Apple's "autocorrect" function? Well, *The Simpsons* predicted all of this in its 1995-1996 seasons. Granted, Lisa's FaceTime uses a rotary phone, but you're not going to accidentally FaceTime someone with that, so maybe they had the better idea.

The Game of Thrones Finale

This content is imported from YouTube. You may be able to find the same content in another format, or you may be able to find more information, at their web site.

Oh, whoops. Spoiler alert? Before [the finale](#)... underwhelmed fans, *The Simpsons* gave Westeros a preview of what was to come. When a dragon rises up and burns down the entire village, it looked an awful lot like the big, chaotic conclusion to the HBO series' final season.

Lady Gaga's Halftime Show

This content is imported from YouTube. You may be able to find the same content in another format, or you may be able to find more information, at their web site.

This one is tricky and we don't want to say Gaga is reductive, but we *will* say that her 2012 cameo on *The Simpsons* bears a striking resemblance to [her Super Bowl half time show](#) from a couple years back.

The Pandemic Response (feat. Killer Bees)

This content is imported from YouTube. You may be able to find the same content in another format, or you may be able to find more information, at their The "Osaka Flu" episode of *The Simpsons* is rife with predictions, but most notably, it really nails the response we've seen following the onset of the COVID-19 virus. With suggestions from authorities that there is no cure and that bedrest is what's *really* needed, we get a bonus prediction when townspeople overturn a truck and reveal killer bees, reminiscent of the reports we saw in 2020.

Disney Buys Fox

Two decades before it came true, the series predicted that Disney would buy Fox. And all these years later, here we are...

9/11

Perhaps the strangest and most famous of these predictions is that The Simpsons appeared to allude to 9/11 in the 1997 episode "The City of New York vs. Homer Simpson." As [Jean described it to Esquire](#): "The one that was really odd—and I can't understand how this happened, it was so bizarre—in our New York show before, in 1998, there was a pamphlet that said, 'New York on \$9 a day,' and then the World Trade Towers were right behind the nine, and it looked like 9/11. If you had designed something to reflect it, you couldn't have made a design that would've made it look any clearer. So that one—that spooks me to this day. That is really odd."

From <<https://www.esquire.com/entertainment/tv/a35279081/best-simpsons-predictions-future/>>

How The Simpsons predicted 9/11, Trump and Disney-Fox

Have 'The Simpsons' creators got a crystal ball? You could be forgiven for thinking so

Wed, Feb 14, 2018, 06:00



Came true: 2018

Team USA's men's curling team defeated Sweden in a shocking upset at the 2018 Olympics that brought yet another *Simpsons* storyline to real-life fruition. Mirroring events from a 2010 episode in which Marge and Homer made it onto the U.S. mixed doubles curling team, the Americans came from behind in their Feb. 25 matchup with Sweden to capture gold at the Winter Games in PyeongChang.

Advertisement

Drogon's Fiery Rampage on *Game of Thrones*

Season 29, Episode 1: The Serfsons

Predicted: 2017

Came true: 2019

A 2017 episode called "The Serfsons" saw Homer, Marge and the rest of the Simpsons gang find themselves in the kingdom of Springfieldia, an alternate fantasy universe that parodied many aspects of life in Westeros on *Game of Thrones*. There was even a fire-breathing dragon that burnt down the Serfsons' village, [much like Drogon](#) (acting at [Daenerys' behest](#)) ended up doing to King's Landing in *Game of Thrones'* penultimate episode, "The Bells."

Advertisement

The 2020 Experience

Season 4, Episode 21: Marge in Chains

Predicted: 1993

Came true: 2020

If 2020 was a bingo card, *The Simpsons* could already have at least two squares ticked off. In the nearly 30-year-old episode "Marge in Chains," not only does an unprecedented flu sweep through Springfield, but when the townspeople begin rioting to demand a cure for the virus, a swarm of killer bees that could be likened to the ["murder hornets"](#) that recently hit the U.S. unexpectedly come into the picture.

On the other hand, episode co-writer Bill Oakley told [The Hollywood Reporter](#) in March that any comparisons the storyline seems to invite to coronavirus are purely coincidental. "There are very few cases where *The Simpsons* predicted something," he said. "It's mainly just coincidence because the episodes are so old that history repeats itself. Most of these episodes are based on things that happened in the '60s, '70s or '80s that we knew about."

From <https://time.com/4667462/simpsons-predictions-donald-trump-lady-gaga/>



Al Jean: "There's a brochure that says New York at \$9 a day, and behind the nine are the twin towers. It looks like a 9/11. That one is strange"

There is no crystal ball in *The Simpsons* writers' room, but you could be forgiven for thinking so.

Over its almost 30-year run, the series has alluded to many real-life events long before they've happened: The Trump presidency, the discovery of the Higgs boson particle, 9/11 and, most recently, Disney's takeover of Fox. By some accounts, the coincidences – predictions, if you will – number in the 20s, possibly more. This track record has led fans thinking *The Simpsons*, at the very least, is a product of television's most intelligent writers, and, at the most, prophetic.

So is there something bigger going on?

The future can be forecast better than one might think says Al Jean, one of the show's original writers and its showrunner since 1998. Episodes air a year after they're produced so it's a "frame of mind that we've got, that we think one year ahead ... I predict people will make too much of our great predictions," he says.

Brilliant minds

The show is the product of brilliant minds, many Harvard educated, says William Irwin, chairman of philosophy at King's College in Wilkes-Barre, Pennsylvania. His book *The Simpsons and Philosophy* has been taught for years at the University of California, Berkeley and other places.

Writers rule on *The Simpsons*, not the actors, he says. The result is a show packed with references to art, literature, pop culture, politics and science.

"When that many smart people produce a television show, it's bound to make some startling 'predictions'," he says.

Another possible factor at play: "The law of truly large numbers," a concept presented by Harvard mathematicians Frederick Mosteller and Persi Diaconis in their 1989 paper *Methods for Studying Coincidences*.

"With a large enough sample, any outrageous thing is apt to happen," the law states. *The Simpsons* is the longest-running scripted TV series in history.

For fans looking for answers outside conventional logic, Dr Bernard Beitman, author of *Connecting With Coincidence*, offers the existence of the "psychosphere," our mental atmosphere that is essentially "group mind in action."

"Under the right conditions, we can know things that we don't know we know, and we can sometimes predict events," says Beitman, a former chairman of the psychiatry department at the University of Missouri.

Below are some coincidences from *The Simpsons*, and how they can (or can't) be explained.

September 11th, 2001

Predicted: 1997

Happened: 2001

In *The City of New York vs Homer Simpson*, a moment alludes to the 9/11 attacks on the World Trade Centre in New York City, and not even Jean could explain it.

"There is a frame where there's a brochure that says New York at \$9 a day, and behind the nine are the twin towers ... it looks like '9/11'. That one is a completely bizarre, strange thing," he says.

In 2010, Bill Oakley, an executive producer on the show at the time, told *The New York Observer*: "\$9 was picked as a comically cheap fare," he says. "And I will grant that it's eerie, given that it's on the only episode of any series ever that had an entire act of World Trade Centre jokes."

Disney acquires 21st Century Fox

Predicted: 1998

Happened: 2017

The most recent prediction to come true was Disney's \$52 billion deal for 21st Century Fox, announced in December. In *When You Dish Upon a Star*, there's a sign that reads "20th Century Fox, a division of Walt Disney Co".

Jean says this was in line with the writers' forward-thinking process. The deal "was just another one," he says. "It happens. There's always mergers. It seemed logical, you know?"



Darren Rovell ✓
@darrenrovell



Disney announces it has reached a deal to acquire 21st Century Fox, as predicted by a Simpsons episode that first aired on November 8, 1998.

12:16 PM - Dec 14, 2017

♥ 112K 💬 54.9K people are talking about this

The Higgs boson particle

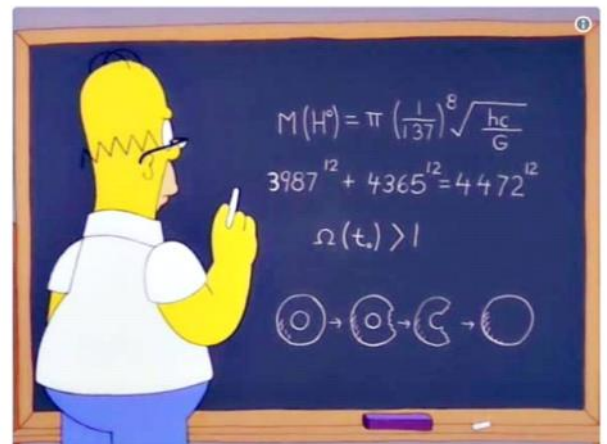
Predicted: 1998

Happened: 2012

At first glance, this might seem like the freakiest *Simpsons* prophecy: Homer, striving to be the next great inventor, standing at a chalkboard on which a complex equation is scrawled.

The equation is a just a hair off what would become the Higgs boson particle, or “God particle,” which was discovered in 2012, decades after it was first presumed to exist. “That equation predicts the mass of the Higgs boson,” Simon Singh, author of *The Simpsons and Their Mathematical Secrets*, told the *Independent* in 2015. “If you work it out, you get the mass of a Higgs boson that’s only a bit larger than the nano-mass of a Higgs boson actually is.”

But it can be explained to some degree: “The Higgs boson was written into the script by David Cohen, who’s one of the people with a math background on this show,” Jean says. “What he put in was a plausible guess at that time. So it wasn’t like totally out of left field.”



The Independent ✓
@Independent



How Homer Simpson discovered the Higgs boson over a decade before scientists ind.pn/17JY11a

11:22 AM - Mar 2, 2015

♥ 98 💬 138 people are talking about this

The Trump presidency

Predicted: 2000

Happened: 2016

While this prediction might seem amazing, it’s actually one of the show’s most logical prognoses, Jean says: “There’s a category I would call ‘plausible predictions’, which Trump would fall under.

“People have somewhat forgotten, but he was talking about running for president then,” he says.

In a 2016 interview with *The Hollywood Reporter*, writer Dan Greaney says the joke was intended as a warning: “That just seemed like the logical last stop before hitting bottom. It was pitched because it was consistent with the vision of America going insane.”



Mike w/ Bestball Soon
@MikeMarFF



This is a direct Simpsons quote from March 2000 in a future where Lisa was president

Once again, The Simpsons is always right

7:21 PM - Dec 8, 2016

♥ 89 💬 93 people are talking about this

Super Bowl XXVI, XXVII and XXVIII

Predicted: 1992, 1993, 1994

Happened: 1992, 1993, 1994

The show predicted the NFL champions three years in a row (in an episode that was all about predictions). And yes, all three were just lucky guesses, Jean says.

In *Lisa the Greek* (1992) Homer and Lisa bond over sports gambling. Lisa has discovered a knack for predicting football winners, which Homer happily cashes in on. Lisa tells Homer that if the Washington Redskins defeat the Buffalo Bills in the Super Bowl, she would still love him. If they don't, she won't.

Washington wins, and all is well between them. Three days after the episode aired, Washington beat Buffalo 37-24.

The episode was reworked in 1993 and 1994 with the new Super Bowl-bound teams, the Dallas Cowboys and the Buffalo Bills both years. Lisa went with Dallas. In 1993, Dallas won 52-17. In 1994, Dallas won 30-13.

1994 was the last time *The Simpsons* altered the episode, and the last time Buffalo made a Super Bowl appearance. — New York Times

From <<https://www.irishtimes.com/culture/tv-radio-web/how-the-simpsons-predicted-9-11-trump-and-disney-fox-1.3391062>>

Inauguration

Tuesday, May 4, 2021 6:21 PM

'The Simpsons' seemed to get it right again -- by predicting part of the inauguration

By Travis Caldwell, CNN

Updated 2:01 AM ET, Fri January 22, 2021



Social media users noted the parallels between Vice President Harris' inauguration outfit and Lisa Simpson from a 2000 episode.

(CNN)First things first: No, "The Simpsons" cannot actually predict the future.

Yet, as the longest-running sitcom in US history, the [timeless series](#) often finds itself aligning with "life imitates art" moments that happen years after airing.

This week, for example, users on social media couldn't help but wonder at the latest coincidence between Vice President [Kamala Harris' outfit](#) during the inauguration and Lisa Simpson's outfit in an episode from 2000.

In "Bart to the Future," Lisa assumes the presidency and [asks the now-viral](#) line, "As you know, we've inherited quite a budget crunch from President Trump."



Lisa Simpson as president in the 2000 episode "Bart to the Future"

In the episode, Lisa wore a purple jacket and pearls. At Wednesday's inauguration, Harris wore a purple jacket and pearls. With Harris serving immediately after Donald Trump's presidency, comparisons by viewers were readily made.

The similarities with the inauguration didn't stop there for Simpsons fans. Actor Tom Hanks appeared as a host during a [virtual concert](#) Wednesday evening, which aimed to keep with President Joe Biden's theme of national unity in a time of crisis.

In "The Simpsons Movie" from 2007, Hanks [in a cameo role](#) pitches a proposed new Grand Canyon at Springfield, the hometown of the Simpsons.



['The Simpsons' remain our psychics](#)

"Hello. I'm Tom Hanks. The US government has lost its credibility, so it's borrowing some of mine," he says.

At the end of the scene, he says, "If you're gonna pick a government to trust, why not this one?"

Speculation over the show's prescient abilities is nothing new. Fans claim the [show predicted](#), among other instances, the Siegfried and Roy [tiger attack](#), smart watches, ["murder hornets."](#) and Disney [buying](#) 20th Century Fox.

The show's longevity and its exhausting of possible sitcom scenarios have even been referenced in other comedies, including the "South Park" episode, "The Simpsons Already Did It."

When asked in 2016 about predicting a Donald Trump presidency [so far in advance](#), writer Dan Greaney told The Hollywood Reporter, "It was a warning to America."

"And that just seemed like the logical last stop before hitting bottom. It was pitched because it was consistent with the vision of America going insane," he added.

From <<https://www.cnn.com/2021/01/22/us/simpsons-lisa-harris-inauguration-trnd/index.html>>

Partly false claim: a 1993 Simpsons episode predicted the new coronavirus outbreak

By Reuters Staff
4 MIN READ

A viral theory online claims a 1993 episode of The Simpson predicted the global coronavirus outbreak. The posts, featuring four images from The Simpsons, have been shared over 18,000 times on Facebook and over 5,000 times on Twitter as of March 13, 2020 ([here](#) , [here](#) , [here](#)). Most social media users who shared this theory did so in good humor, however a minority have implied that the apparent prediction is further evidence of a media-led conspiracy.

The Simpsons did not predict the new coronavirus outbreak. This claim references Episode 21 of Season 4 of the show, entitled "Marge in Chains" (www.imdb.com/title/tt0701171/). The episode, which aired in 1993 as stated, does not talk about Coronavirus but about the fictional disease "Osaka Flu". Images on social media have been edited to make it look like the episode was about coronavirus.

Most of the posts feature four images. Three of them are authentic, visible youtu.be/Z7MM6iGa5U4?t=191 , youtu.be/Z7MM6iGa5U4?t=227 and youtu.be/Z7MM6iGa5U4?t=221 . A fourth edited image shows Springfield's anchor Kent Brockman presenting the news in his studio. The image has been edited, adding the words "CORONA VIRUS" to the screen. This fourth clip is from the Season 22 Episode "The Fool Monty" ([here](#)). The message on the screen originally reads "Apocalypse Meow" (youtu.be/YxGeUls0Miw?t=28).

Bill Oakley, one of the two writers of the 1993 episode, described the claim to Reuters as a "stretch", as the episode was based on other events that had already happened.

"I don't specifically remember which viruses had been in the news in the decade before we wrote it but there were probably a few. The story was assigned to us by the showrunners Mike Reiss and Al Jean and they told us to read 'The Plague' by Albert Camus which is what the entire first act is based on", Oakley told Reuters. "I would say in general when people say The Simpsons has predicted something it is just that we were satirizing real life events from years before and because history keeps repeating it just SEEMS like we were predicting things".

In the Simpsons episode, the fictional Osaka Flu arrives in Springfield from Osaka, Japan, via an infected package. According to the Centers for Disease Control and Prevention (CDC), there is likely a very low risk of spread of coronavirus from products or packaging that are shipped over a period of days or weeks at ambient temperatures ([here](#)).

VERDICT

Partly false claim: a 1993 episode of The Simpsons episode was about fictional disease called "Osaka Flu". A screenshot from a different episode was edited to include the words 'corona virus'.

This article was produced by the Reuters Fact Check team. Read more about our fact checking work [here](#) .

From <<https://www.reuters.com/article/uk-factcheck-coronavirus-simpsons-idUSKBN21112V>>

'The Simpsons' predicted the coronavirus outbreak over 20 years ago

By [Hannah Sparks](#)

March 27, 2020 | 11:25am | [Updated](#)

Simpsons predict coronavirus

The animated prophecies of "The Simpsons" have long been documented by fans of the series. Now in its 31st year, the cartoon created by Matt Groening [predicted many a world-altering event](#) long before they took place, including Donald Trump's presidency, Greece's economic meltdown and the underdog American Olympic curling team besting the Swedes.

And, according to one astute viewer, it seems they may have also seen a pandemic of global proportions coming two decades ago. In an episode that aired in 1999, news anchor Kent Brockman is depicted delivering the day's headlines from his own home in observance of new curfew laws in Springfield aimed specifically at seniors.

Here in the real world, many countries and US states have [ordered the closure of all "non-essential" businesses](#), forcing citizens into their homes for an indefinite isolation period intended to bring down the still-rising toll the coronavirus is taking on businesses.

"This is Kent Brockman . . . reporting from my own home," he says, "in accordance with the new curfew for anyone under 70."



In a tweet by British TV writer Scott Bryan, he [shares](#) a "Simpsons" scene still alongside an image of BBC Channel 4 correspondent Krishnan Guru-Murthy, whose on-air greeting eerily parallels Brockman's. It's a situation to which many broadcast news reporters around the world can now relate.

"I hate to say it, I really do, but The Simpsons has . . . I can't actually," tweeted Bryan — clearly reticent to admit the soothsaying "Simpsons" had done it again.

But show scholars would know that the plot of the episode depicted an entirely different sort of crisis.



The episode, titled "Wild Barts Can't Be Broken," first aired in January 1999 during their 10th season. In it, Homer and his friends Lenny, Barney and Carl drunkenly vandalize Springfield Elementary School. Assuming children were to blame — namely Bart, Lisa and their cohorts — police chief Wiggum enforces a nightly curfew for anyone under the age of 70.

Fans have also suggested that a 1993 episode, called "Marge in Chains," which references a so-called "Osaka flu," may also be an indication of "Simpsons" provenance. But episode writer Bill Oakley [denied the idea](#) to the Hollywood Reporter earlier this month. He clarified that the virus plot device was inspired by the 1968 flu pandemic, which began in British Hong Kong, and an "absurd" joke about how the virus made it to Springfield. As the story goes, Marge contracts the flu as she opens a box with virus-laden air from a cough that had been sealed inside.

Speaking of "The Simpsons" predictions in general, Oakley said, "It's mainly just coincidence because the episodes are so old that history repeats itself."

The coronavirus won't keep the creators of America's favorite family down. The show [confirmed earlier this week](#) that production on Season 32 is moving ahead virtually as the teams continue their work from home.

From <<https://nypost.com/2020/03/27/the-simpsons-predicted-the-coronavirus-outbreak-over-20-years-ago/>>

Which Simpsons Episode Predicted President Donald Trump

The Simpsons predicted the future once again when Donald Trump was elected president of the United States. Here's which episode holds the prediction.

Fox's hit animated show [*The Simpsons*](#) has parodied Donald Trump becoming president on multiple occasions, but they predicted his election many years before. There's no question *The Simpsons* is best known for its characters, their yellow designs, and the comedy it routinely delivers. These elements are just a few of the reasons the show has [continued to be successful after 30 years](#), but the show has also developed a history of predicting the future.

One of the most notable examples of *The Simpsons* seeing the future came to fruition [when Disney officially bought Fox](#). In typical *Simpsons* fashion, they've already used their new home to [crack even more jokes](#), as almost no subject is off-limits. For years, this has included political satire. *The Simpsons* has joked about a variety of political issues over the years, with [Donald Trump becoming a recurring target](#) after he was elected president. The series even parodied the announcement of him winning and repeatedly explored the election cycle.



511

The parody, though, is not when *The Simpsons* managed to correctly predict that Trump would one day become the president of the United States. Back in 2000, the seventeenth episode of season 11, titled "Bart to the Future," saw the show [explore the future](#) through Bart. He is able to see the future after an encounter with the manager of a casino and witnesses what life is like roughly 30 years from then. Although not the current president, this is when the episode reveals that Donald Trump was previously running the country.

The prediction that Trump would one day become president came sixteen years before he was elected to office. *The Simpsons* made this prediction in a rather off-hand way though, as Lisa was the current president in the future Bart saw. His future self visited his now successful younger sister at the White House, allowing the series to show how Lisa was doing as POTUS. This is where *The Simpsons*' prediction comes from, as Lisa is trying to deal with the financial state of the country after Trump's presidency. According to the meeting, [his time in office](#) left Lisa with a budget crunch. Even though *The Simpsons* didn't pinpoint the exact moment when Trump would become president, it still happened within the parameters of their prediction. The year that "Bart to the Future" is set in is 2030, and unless the election cycle changed within this fictional world, Lisa would've been elected in 2028 as there is no indication she's in the middle of a second term. All *The Simpsons* needed then was for Trump to be elected by 2024 to make this prediction accurate, but it was proven to be right eight years prior.

From <<https://screenrant.com/simpsons-donald-trump-president-prediction-episode-bart-future/>>

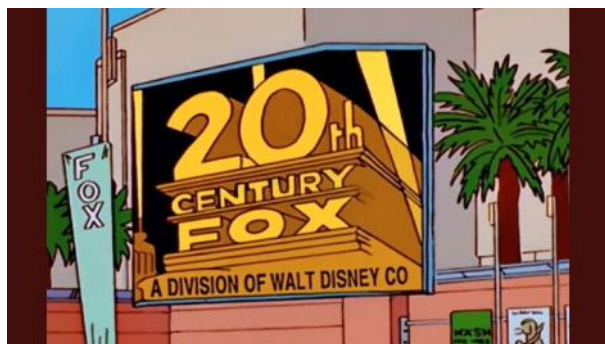
Disney Buys Fox

Tuesday, May 4, 2021 6:16 PM

The Simpsons Predicted Disney & Fox Deal 19 Years Ago

Disney is now officially set to buy FOX's movie and TV studio, including associated franchises. As usual, *The Simpsons* predicted that would happen.

[Disney is now officially set to buy FOX's](#) movie and TV studio, and as usual, [The Simpsons](#) predicted this turn of events long in advance. *The Simpsons* has been on the air for nearly 30 years, and few pop culture institutions have touched the awareness of the masses to the extent that Homer and family have. There seems to be a *Simpsons* quote appropriate to just about every real life situation, and the series' characters and colorful universe continue to resonate with audiences the world over. It's not really a surprise that *The Simpsons* managed to predict Disney buying FOX, as the animated hit boasts a long history of successful pop culture predictions. The most famous such forecast at this point is probably *The Simpsons*' 2000 prediction that [Donald Trump](#) would one day become the President of the United States. The Simpsons also predicted that Arnold Schwarzenegger would battle Satan in a film - which he did in 1999's *End of Days* - and that Siegfried and Roy's tigers would go berserk and attack during a performance.



The Simpsons' Disney/FOX prediction was brought to light once again via the Twitter account @simpsons_tweets, which made the following post reminding fans of the fateful prognostication.

That screenshot is taken from the 1998 season 10 *Simpsons* episode "When You Dish Upon a Star," written by Richard Appel and directed by Pete Michels. In the episode, Homer becomes close friends with then-Hollywood power couple Alec Baldwin and Kim Basinger, only to lose their trust when he starts revealing their secrets to others. Ron Howard also cameos, as does fellow industry bigwig Brian Grazer. Amusingly, Howard is shown pitching ideas to Grazer on the Disney-owned FOX lot, and Grazer's office has a *Star Wars* poster in it. Disney would of course go on to buy Lucasfilm in 2012, and Howard would go on to direct the upcoming [Solo: A Star Wars Story](#).

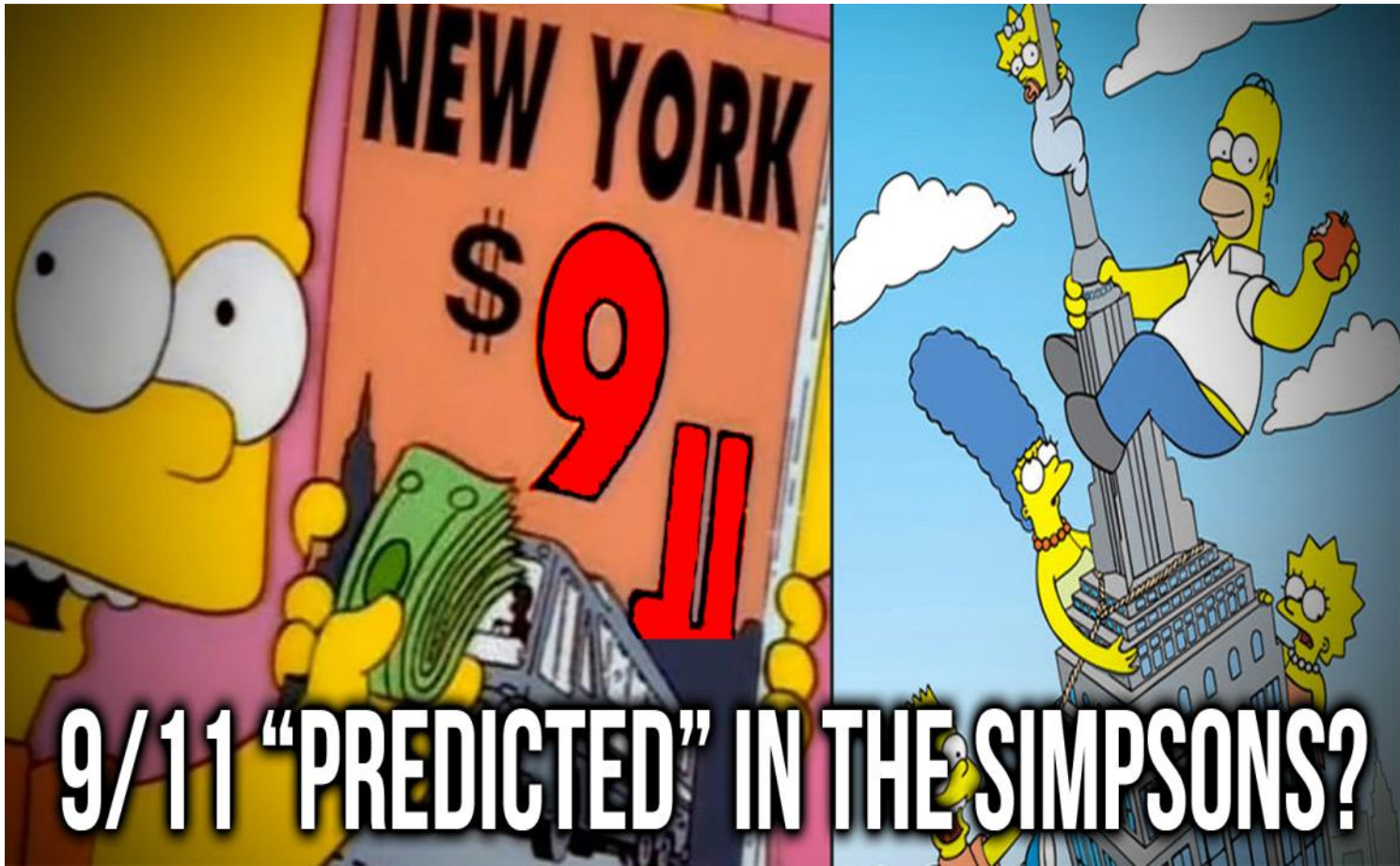
As for *The Simpsons*' future, one assumes that Disney won't be in too big a hurry to cancel a show that still draws some of the highest ratings on broadcast TV, and FOX - who will still control the actual TV network - will be happy to work out a deal to keep *The Simpsons* on the air. How much longer *The Simpsons*' producers and cast will want to keep making the show is another issue entirely. Showrunner [Al Jean has hinted that season 30 might be the last](#), but nothing is official as of yet.

From <<https://screenrant.com/simpsons-predicted-disney-fox-deal-19-years-ago/>>

9/11

Tuesday, May 4, 2021 6:23 PM

9/11 "PREDICTED" IN THE SIMPSONS?



Did a 1997 episode of The Simpsons warn us about the destruction of the Twin Towers? The Coincidence Theorist investigates...

In a 1997 episode of The Simpsons, 'The City of New York vs. Homer Simpson', Lisa Simpson presents a 9\$ magazine entitled 'New York'.



"Absolutely nothing unusual about this," says The Coincidence Theorist. Conspiracy theorists have suggested that the magazine's peculiar design could've been a deliberate allusion to the 9/11 attacks that would take place four years later.



In the same scene, Bart Simpson holds up a stack of money in front of the magazine. Some have speculated that these dollar bills also encode unusual twin pillar symbolism.



Others have even drawn comparisons between the design of Bart's dollar bills and the design of a Masonic tracing board.



However, what they *don't* realise is that this is all just a big coincidence. Check out the video below for a more detailed explanation:

From <<http://thecoincidence theorist.com/911/911-predicted-in-the-simpsons/>>

Crazyboard

Thursday, May 6, 2021 7:19 PM

